

Practical & Oral exam (Postponed students)  
1<sup>st</sup> year (credit hours), Aug. 2020  
Entomology

Part (1): Practical Exam

Specimens no. 1, 2, 3, 4, 5

- a- Identify (type, Position if present, Example).
- b- Clarify its articulation site, one of its characteristics & function.



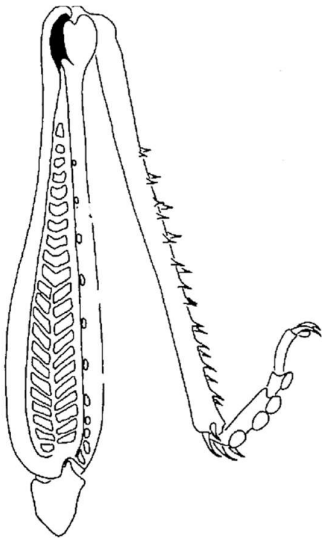
1



2



3



4



5

Specimens no. 6, 7

- a- Identify (type and example).
- b- Determine the efficient parts and structural adaptation for feeding.



6



7

Specimens no. 8, 9

- a- Identify.
- b- Determine the abdominal appendages, its type & function.



8

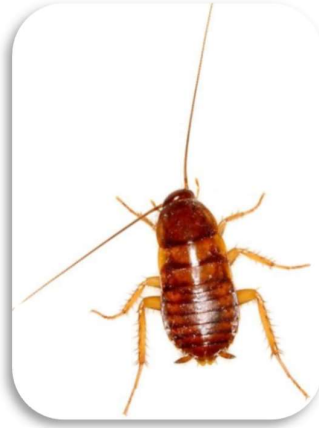


9



**Specimens no. 10**

- a- Identify and determine the type of metamorphosis.
- b- Clarify how the specimen resemble & differ from its parents.



10

**Part (2): Oral Exam**

- 1) The relationship between insects and humans is long and complex. From your study, briefly discuss this statement with examples. (2 pages)

---

*Best Wishes*  
*Prof. Dr. Mohammed Elbokl*